

FLUVIA

Standard close with stainless steel hinge

The FLUVIA model presents a round shape and semi wrap-over aesthetic, partially revealing the ring. In addition, it is adjustable and allows mounting from the top and bottom. Standard close closure system.



features



StandardClose



Adjustable



TopMount



BottomMount



RoundShape

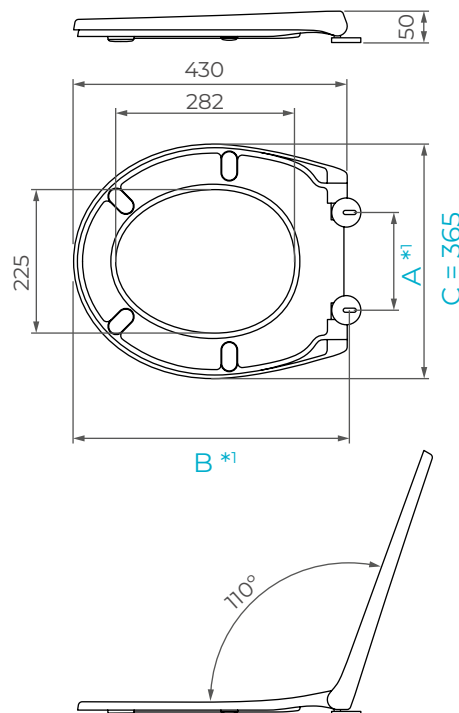


Semi Wrap-over

general specifications








Toilet seat material	Duroplast
Color	White
Design type	Round shape / Semi wrap-over
Specifications	
• Hinges	Standard close
• Buffers	2 buffers at cover / 4 buffers at ring
• Total length	430 mm
• Total width	365 mm
• Total height	50 mm
• Weight	2,3 kg

general measures



*1 See the measures for each of the solutions in the table.

solutions features*2

Product code CSUABA00KB	 C0092062F0	 Slot Adjust	 Top Mount	 Anchor Fix	A: 146 - 164 B: 384 - 407 / 423 - 446
Product code CSUABB00KB	 C0092051F0	 Bottom Mount	 Quick Fix		A: 148 - 162 B: 411,5 - 418,5

*2 To consider other needs/options, contact our technical department.