

GAIA

Standard close with stainless steel hinge

The GAIA model presents a round shape and sandwich slim aesthetic, fully revealing the ring and following a minimalist design. In addition, it is adjustable and allows mounting from the top or bottom.



features



StandardClose



Adjustable



TopMount



BottomMount



RoundShape

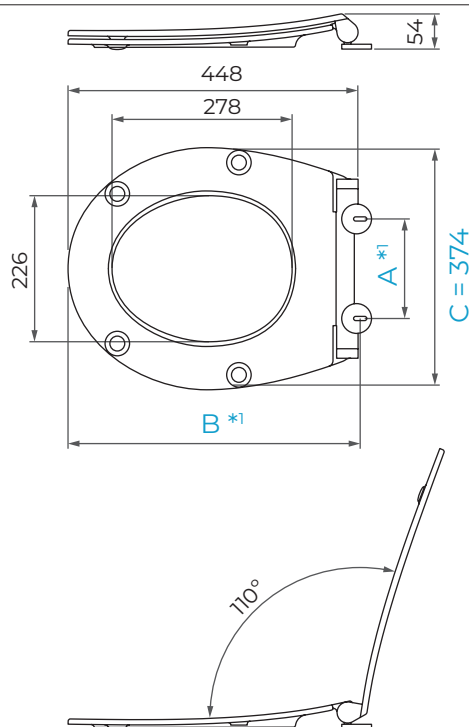


Sandwich Slim

general specifications








Toilet seat material	Duroplast
Color	White
Design type	Round shape / Sandwich slim
Specifications	
• Hinges	Standard close
• Buffers	2 buffers at cover / 4 buffers at ring
• Total length	448 mm
• Total width	374 mm
• Total height	54 mm
• Weight	2,5 kg

general measures



*1 See the measures for each of the solutions in the table.

solutions features*2

Product code COUE100011	 C0092062F0	 SlotAdjust	 TopMount	 AnchorFix	A: 146 - 164 B: 402 - 425 / 441 - 464
Product code COUE110011	 C0092051F0	 BottomMount	 QuickFix		A: 148 - 162 B: 429,5 - 436,5

*2 To consider other needs/options, contact our technical department.