



# TOR

## SlowClose with stainless steel release hinge

The TOR model presents a D-Shape, shaped like letter D, and wrap-over aesthetic, completely covering the ring when it is closed. Thanks to the SlowClose system, it allows a delayed fall that provides safety and comfort. With the Release&Clean system it is easy to remove for better cleaning. In addition, it is adjustable and allows mounting from the top.



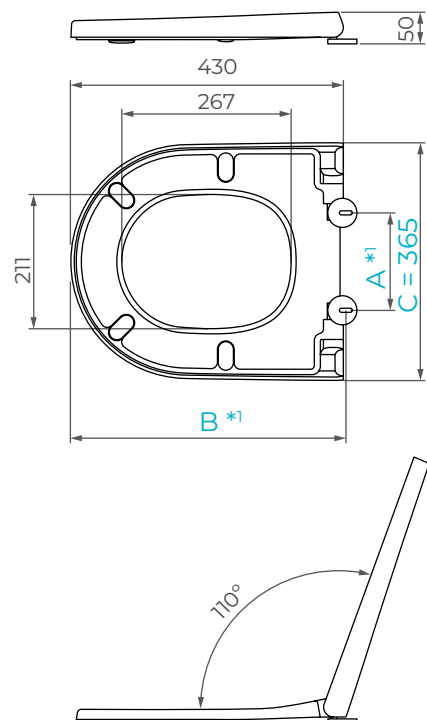
### features

					
<b>SlowClose</b>	<b>Release&amp;Clean</b>	<b>Adjustable</b>	<b>TopMount</b>	<b>D-Shape</b>	<b>Wrap-over</b>

### general specifications








<b>Toilet seat material</b>	Duroplast
<b>Color</b>	White
<b>Design type</b>	D-Shape / Wrap-over
<b>Specifications</b>	
• Hinges	SlowClose / Release&Clean
• Buffers	2 buffers at cover / 4 buffers at ring
• Total length	430 mm
• Total width	365 mm
• Total height	50 mm
• Weight	2,5 kg

### general measures



\*1 See the measures for each of the solutions in the table.

### solutions features\*2

<b>Product code</b> CSUCA00KB	 C0091162FO				A: 101 - 209 B: 388,5 - 402,5 / 427,5 - 441,5
<b>Product code</b> CSUCAF00KB	 C0091152FO				A: 146 - 164 B: 410,5 - 419,5

\*2 To consider other needs/options, contact our technical department.