

TOR

Standard close with stainless steel hinge

The TOR model presents a D-Shape, shaped like letter D, and wrap-over aesthetic, completely covering the ring when it is closed. In addition, it is adjustable and allows mounting from the top and bottom. Standard close closure system.



features



StandardClose



Adjustable



TopMount



BottomMount



D-Shape

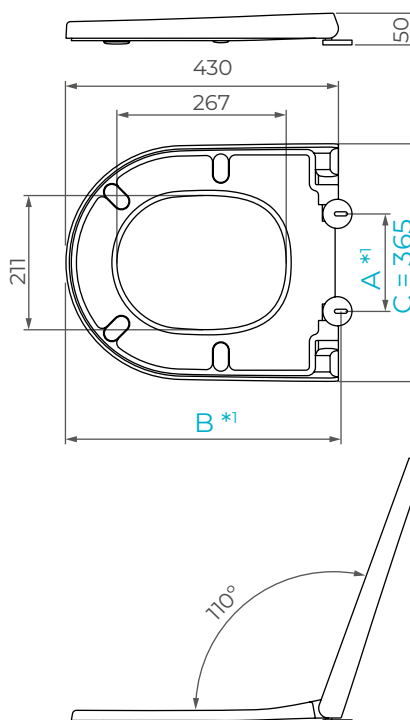


Wrap-over

general specifications








Toilet seat material	Duroplast
Color	White
Design type	D-Shape / Wrap-over
Specifications	
• Hinges	Standard close
• Buffers	2 buffers at cover / 4 buffers at ring
• Total length	430 mm
• Total width	365 mm
• Total height	50 mm
• Weight	2,5 kg

general measures



*1 See the measures for each of the solutions in the table.

solutions features*2

Product code CSUCBA00KB	 C0092062F0	 SlotAdjust	 TopMount	 AnchorFix	A: 146 - 164 B: 384 - 407 / 423 - 446
Product code CSUCBB00KB	 C0092051F0	 BottomMount	 QuickFix		A: 148 - 162 B: 411,5 - 418,5

*2 To consider other needs/options, contact our technical department.